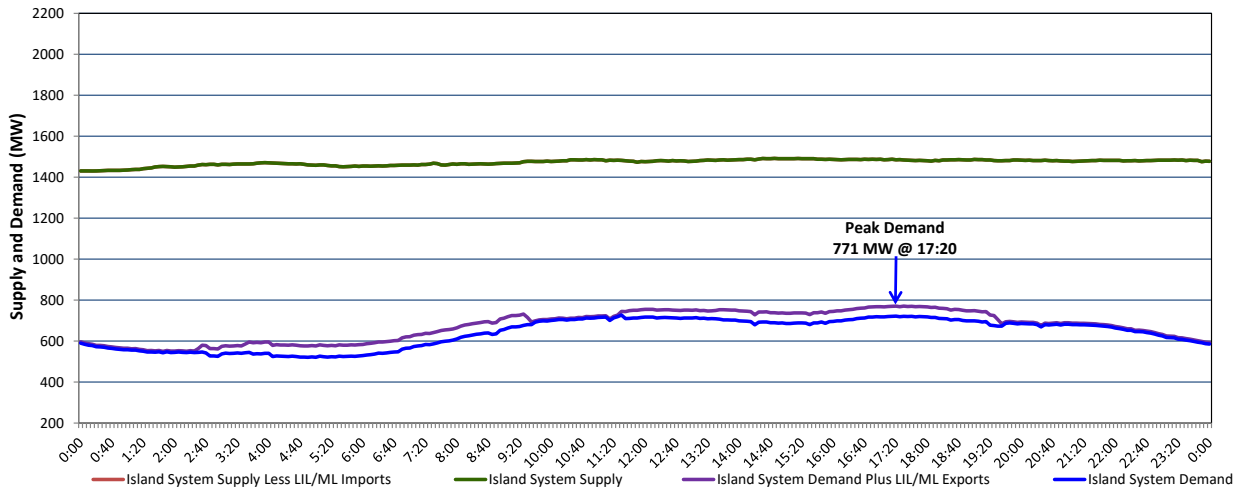


Newfoundland Labrador Hydro (NLH) Supply and Demand Status Report Filed Monday, June 20, 2022

Section 1 Island Interconnected System Supply, Demand & Exports Actual 24 Hour System Performance For Saturday, June 18, 2022



Supply Notes For June 18, 2022

1,2

- A As of 0857 hours, April 04, 2022, Holyrood Unit 3 unavailable due to planned outage (150 MW).
 B As of 1327 hours, May 08, 2022, Bay d'Espoir Unit 6 unavailable due to planned outage (76.5 MW).
 C As of 2351 hours, May 28, 2022, Holyrood Unit 2 available but not operating 150 MW (170 MW).
 D As of 1317 hours, May 29, 2022, St. Anthony Diesel Plant available at 8.85 MW (9.7 MW).
 E As of 0800 hours, June 08, 2022, Holyrood Unit 1 unavailable due to planned outage (170 MW).

Section 2 Island Interconnected Supply and Demand

Sun, Jun 19, 2022	Island System Outlook ³		Seven-Day Forecast	Temperature (°C)		Island System Daily Peak Demand (MW)	
				Morning	Evening	Forecast	Adjusted ⁷
Available Island System Supply: ⁵	1,480	MW	Sunday, June 19, 2022	17	14	735	735
NLH Island Generation: ^{4,8}	1,125	MW	Monday, June 20, 2022	13	13	795	795
NLH Island Power Purchases: ⁶	135	MW	Tuesday, June 21, 2022	13	15	790	790
Other Island Generation:	220	MW	Wednesday, June 22, 2022	12	10	800	800
ML/LIL Imports:	-	MW	Thursday, June 23, 2022	15	15	790	790
Current St. John's Temperature & Windchill:	15 °C	N/A	Friday, June 24, 2022	13	13	790	790
7-Day Island Peak Demand Forecast:	800	MW	Saturday, June 25, 2022	17	17	735	735

Supply Notes For June 19, 2022

3

- Notes:
- Generation outages for running and corrective maintenance are included. These are not unusual for power system operations. They generally do not impact customer supply. The power system operators schedule outages to system equipment whenever possible to coincide with periods when customer demands are low and sufficient supply reserves are available. However, from time to time equipment outages are necessary and reserves may be impacted.
 - Due to the Island system having no synchronous connections to the larger North American grid, when there is a sudden loss of large generating units there may be a requirement for some customer's load to be interrupted for short periods to bring generation output equal to customer demand. This automatic action of power system protection, referred to as under frequency load shedding (UFLS), is necessary to ensure the integrity and reliability of system equipment. Under frequency events have typically occurred 5 to 8 times per year on the Island Interconnected System and the resultant customer load interruptions are generally less than 30 minutes. With the activation of the Maritime Link frequency controller during the winter of 2018, UFLS events have occurred less frequently.
 - As of 0800 Hours.
 - Gross output including station service at Holyrood (24.5 MW) and improved NLH hydraulic output due to water levels (35 MW).
 - Gross output from all Island sources (including Note 4).
 - NLH Island Power Purchases include: CBPP Co-Gen, Nalcor Exploits, Rattle Brook, Star Lake, Wind Generation and capacity assistance (when applicable).
 - Adjusted for curtailable load, market activities and the impact of voltage reduction when applicable.
 - Due to limitations inherent in the design of combustion turbines, the output of combustion turbines may be reduced in the event that ambient temperatures exceed the threshold.

Section 3 Island Peak Demand Information Previous Day Actual Peak and Current Day Forecast Peak

Sat, Jun 18, 2022	Actual Island Peak Demand ⁹	17:20	771 MW
Sun, Jun 19, 2022	Forecast Island Peak Demand		735 MW

- Notes: 9. Island Demand / LIL / ML Exports (where applicable) is supplied by NLH generation and purchases, plus generation owned and operated by Newfoundland Power and Corner Brook Pulp & Paper (Deer Lake Power, DLP).